

RLS1515 / RLS1530 Barcode label scale



Contents

Introduction	1
1. The Label scale's specification	2
2. Features Summary	3
2.1 Unique and powerful network	3
2.2 Usage is easy to learn	3
2.3 Advanced functions and durable quality	3
3. Label scale installation steps	4
3.1 Installation	4
3.2 The installation of the thermal label paper	5
3.3 Keyboard	6
3.4 Description of label paper	6
4. Overall Appearance	6
5. Common easy-to -use operations	7
5.1 Switch on and off	7
5.2 Weighing and pricing	7
5.3 Tare operation	8
5.4 Discount	8
5.5 Price Changing	8
5.5.1 Permanent Changing	8
5.5.2 Temporary Changing	9
5.6 Choosing Unit of Weight	9
5.7 Charging by Piece	9
5.8 Price Tag Printing	10
5.9 Quick Copy	10
5.10 Automatic fast packaging	10
5.11 Operation button in common use	10
6. Wireless Label Scale Setting Instruction	11
6.1 Network connection mode	11
6.2 Router set up	11
6.3 Label Scale Setting	11
6.4 Computer RLS1000 software settings	11
7. Function setting	12
7.1 Input settings of single item	12
7.2 System set up	12
7.3 Lock	14
8. Troubleshooting	15
8.1 Scales crash	15
8.2 Print related issues	15
8.3 The key issues	18
8.4 Weigh problem	18
8.5 Communication problem	19
8.6 Display problem	19
8.7 Error code	19
8.8 Other problems	20
9. The acceleration of gravity revised table	21

Introduction

Thank you for choosing our Label scale RLS. In order to operate RLS correctly, User manual is detailed in function and operation method of RLS , which help user with doubt quickly when come up against mechanical fault .

Rongta research, develop, produce and sale RLS independently, which is high-performance barcode label scale.

RLS is the best choice for user in label printing business line with fashion appearance, power function and high durable, which make RLS more popular in store ,fresh food supermarket ,farmers market and so on.

Note : this product information are subject to change without prior notice.

This information is for reference only. In addition to China's existing laws and regulations, the company does not undertake any due to the direct or indirect losses caused by use of this information.

The company reserves the final interpretation.

1. The Label scale's specification

- The Weighing range and accuracy.

RLS1515

Max weight: 15kg

0kg to 6kg * 0.002kg (e=2g)

Min weight: 40g

6kg to 15kg * 0.005kg (e=5g)

RLS1530

Max weight: 30kg

0kg to 15kg * 0.005kg (e=5g)

Min weight: 100g

15kg to 30kg * 0.010kg (e=10g)

- The accuracy grade: $\textcircled{\text{III}}$

- Resolution:

Input sensitivity: greater than or equal to 50 μ V/D

zero-point adjustment range: ± 60 mV

temperature coefficient: $\pm 0.0012\%$ CTYP

[Zero] $\pm (0.2\mu\text{V} + 0.0008\%$ of Dead Load)/ $^{\circ}\text{C}$ TYP

Nonlinearity: 0.01%F.S.

A/D resolution: Max 30000 resolution

Display resolution: 1/3000

A/D conversion rate: 6 times/second

- LCD display board:

Info/weight: 5byte(APHA)

Unit price: 6 byte

Total price: 7 byte

Unit of weight: g. kg

- Regular:

Power supply: 100V-240V~, 50/60Hz

Power consumption: Standby 3W, line printing 50W

operating temperature: 0 $^{\circ}\text{C}$ ~40 $^{\circ}\text{C}$

2. Features Summary

2.1 Unique and powerful network

- a. Use the Ethernet interface technology and the data transfer rate has been improved drastically
Advice: When you use the Ethernet interface, suggest using the shielded cable.

2.2 Usage is easy to learn

- a. Operate the PLU by single bond to make fast sales, and the front desk staff could use it without training.
- b. 40 direct buttons and 80 hot buttons can be set up, and the common goods can be specified to hot buttons mostly.

2.3 Advanced functions and durable quality

- a. The under machine program can be upgraded by PC, the program will be the latest version and the function would be the most perfect forever.
- b. The design of the Printer structure is exquisite, is not easy to roll the paper.
- c. Barcode rotation could extend the lifetime of the print head, and the printer mechanism could be adjusted according to the paper's sensitivity.
- d. Having the function of weighing and pricing for the various packages, along with special designed barcode printing.
- e. Function: It can use a few goods to make up to platter, fruit basket, etc.
- f. Each PLU could be set to multiple tags.
- g. Each PLU could be used by separated barcode encoding formats, which could solve the encoding problem from distribution and consignment sales.
- h. Each PLU could use separated units.
- i. The unit of quantity could be self defined, such as block, packages, etc.
- j. PLU has abundant information, Including barcode format, fresh code, package type, information provision, etc.
- k. Rotational printing the whole label.
- l. Support Ean-8, Ean-13 and 18 code, completely solving the problem of fresh commodities code.
- m. Unique bar code type to manage the fresh commodities by batch.

3. Label scale installation steps

3.1 Installation



a. Connect air fittings



b. Put the air fittings inside the display bar



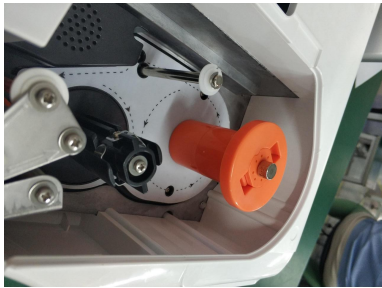
c. Install the display bar and put the tray



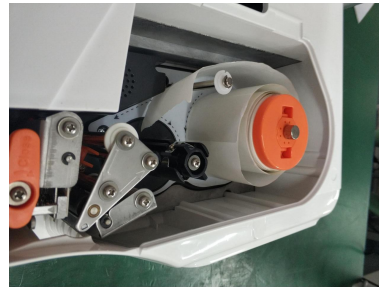
d. Observe the level bubble at the right side printing paper exit of main body.

e. Adjust the feet to make the level tool inside the little circle

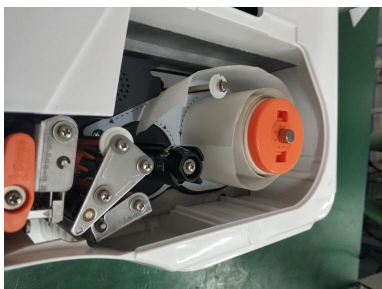
3.2 The installation of the thermal label paper



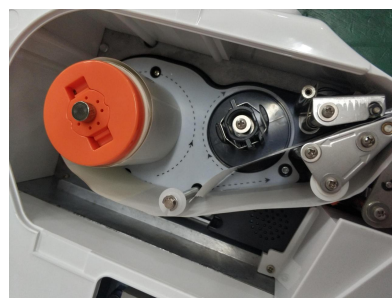
a. Open the dust cover and remove the paper stop block.



b. Load the paper roll.



c. Open the print head module.



d. Tear off the first few pieces of label paper and send the paper across the rubber roller set.



e. Wind the paper on the paper winding shaft for fastening and fasten the print head.



f. Press [FEED] button to roll paper.



g. Restore the paper stop block and close the dust cover.

3.3 Keyboard

Press [↑] button to adjust label position and long press [↑] button to align paper.



3.4 Description of label paper

The label which is used at RONGTA Label Scale is: Thermal Seam Marking Label. As shown below:

Height: 60mm, width: (30~60)mm, Max outside diameter: 100mm, Minimum inner diameter: 40mm or 26.8mm.



Inner diameter 26.8mm



Inner diameter 40mm



Match the corresponding roll mandrel
(default 40mm, 26.8mm optional)

4. Overall Appearance

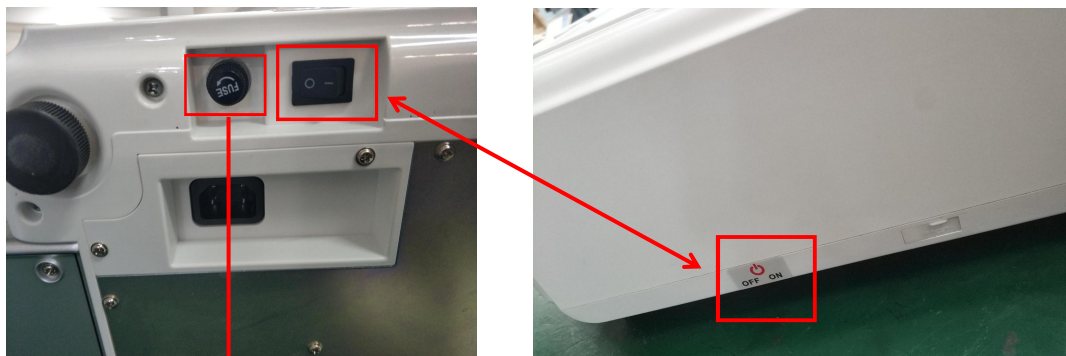


- a. Host
- b. Tray
- c. Display group(A liquid crystal display, display bar, the four screws,four screws)
- d. Thermal label paper
- e. One fuses
- f. User manual
- g. Serial cable
- h. Power cable

5. Common easy-to-use operations

5.1 Switch on and off

Hard disk switch on/turn on: After connecting power supply, switch on the power button at the bottom of the scale. After the screen shows one by one the information of edition No., IP address, self-test countdown “0 、 1、 2、8”,the scale enter into sale pattern.



Fuse position

Attention: under self-test situation, please do not press any button and make sure nothing is on the scale, otherwise it can't work normally.

Soft disk switch on/off: Please switch on the power button, then press the button **[ON/OFF]** for 2 seconds.

5.2 Weighing and pricing

There are three methods for weighing and pricing. If the PLU information has been downloaded from PC or edited in the scale in advance, take the Method 1 and Method 2. If not, take the Method 3.

1. Under the “automatic printing” situation, once the weight is stable system will print label, if the weight and unit price is not zero showed.
2. When the “AUTO” arrow lights on screen , it means the system is in the state of auto printing .Press the **[AUTO PRN]**can switch the state.(You can set whether to auto print or not when starting in the **[SETTING]** , the operation is according to the 7.2 system setting .
3. If nothing is on the scale tray or pressing the “zero” button even something on the tray and the light “zero point” is on, it means the scale is under zero point condition.
4. The following operations, including peeling, pricing with piece, discount and changing price, are based on automatic printing. If the scale is not under automatic printing condition (automatic printing light is off), you need to press the button **[PRN/ENTER]** for label printing.

Method 1: hotkey operation

Example: sale green onion 2kg. Suppose the hotkey is 1 and the unit price is €1.50/kg.

Operation procedure: press the button **[ZERO]** (if the screen already shows zero, the action can be slipped) put 2kg green onion on the scale tray ⇨ press the hotkey 1. Now, the relevant weight, unit price and total amount will be shown on the screen and the label will be printed. (PS : In the non-auto printing status , you need to press the key **[PRN/ENTER]**)

- 80 hotkeys in total and is changeable and can be printed by control PC.
- The above operation is suitable for hotkey 1-40; as for hot button 41-80, the operation is pressing the

button **[PLU]** + the corresponding hotkey.

- For easy operation, all the PLU can print the latest illustration. The printing function is set by PC.

Method 2: general operation

Example: sale green onion 2kg. The Fresh Commodity Code is 10 and the unit price is €1.50/kg

Operation procedure: press the button **[ZERO]** (if the screen already shows zero, the action can be slipped), put 2kg goods on the scale \Rightarrow press the button **[PLU]** \Rightarrow input the LF code 10 \Rightarrow Press the button **[PLU]**. Now, the relevant weight' unit price, total price will be showed on the screen and the label will be printed.(PS : In the non-auto printing status , you need to press the key **[PRN/ENTER]**)

5.3 Tare operation

The operation is just suitable for the goods need to be packed, e.g. egg, beans etc. There are two methods used for the following situation:1.package and good separated; 2.Package and goods non-separated.

Method 1: suitable for package and good separated

Example: sale one box of apple. Suppose the apple's unit price is €6.0/kg, the hotkey is 05, and the weight is 2.0kg.

Operation procedure: put a container or package box supposed 1.0kg on the scale \Rightarrow press the button **[TARE]** \Rightarrow put on one box of apple \Rightarrow press apple's hotkey 05 \Rightarrow after weighting, take off the products and then press the button **[TARE]** again for elimination.

Method 2: suitable for the tare weight known and the package and goods non-separated

Example: sale one box of apple. The unit price is €6.0/kg, tare weight 1.0kg, and the apple and box weighs 2.0kg in total.

Operation procedure: press the button **[ZERO]** (if the screen already shows zero, the action can be slipped) \Rightarrow input the tare weight \Rightarrow Press the button **[TARE]** \Rightarrow put on one box of apple \Rightarrow press the hotkey 05 \Rightarrow after weighting, press the button **[TARE]** again for elimination.

5.4 Discount

Discount operation:The discount function can be locked via setting password through PC background server. Password can be changed through background at any time.

Operation: Discount in proportion

Example: Vegetable is priced at € 8.0 / kg and 5% off, and vegetable's hotkey is 12.

Procedure: Enter discount 95% on the keypad \Rightarrow press button **[DISCOUNT]** \Rightarrow put the vegetables on scale \Rightarrow enter the hotkey 12.(PS : In the non-auto printing status , you need to press the key **[PRN/ENTER]**).

5.5 Price Changing

5.5.1 Permanent Changing

Method 1:

Example: before changing, apple's unit price is €4.00/kg, after changing, its unit price is €3.00/kg. And hotkey is 05.

Steps: press the apple's hoykey 05 \Rightarrow press button**[PRICE]** \Rightarrow input new price €3.00/kg \Rightarrow press button**[PRN/ENTER]** \Rightarrow weighing and pricing.

Method 2:

Example: before changing, apple's unit price is €4.00/kg, after changing, its unit price is €3.00/kg. fresh commodity code is 15.

Steps: press button[PRICE] ⇒ input the apple's fresh commodity code 15 ⇒ press button[PRN/ENTER] ⇒ input new price €3.00/kg ⇒ press button[PRN/ENTER] ⇒ weighing and pricing.

5.5.2 Temporary Changing

Method 1:

Example: before changing, cabbage's unit price is €1.40/kg, then temporarily changing to €2.00/kg. Fresh commodity code is 13.

Steps: put on 2.00kg cabbage ⇒ input the fresh commodity code 13 ⇒ press button[PRICE] ⇒ input new price €3.00/kg ⇒ press button[PRN/ENTER]

5.6 Choosing Unit of Weight

Method:

press and hold the button[UNIT] for 1 second (hear beeper) ⇒ choose new charge unit. e.g. choose "g" as unit and no operation for 2 seconds means confirm the new unit.

5.7 Charging by Piece

(P.S. for following operation, need to open the "charging by piece" function, with weight is 0 and turn off permanent price changing function. If using [NET CHECK/SET AMT] button, specified total amount function need to be ON)

for single item-Method 1:

input relevant item's fresh commodity code (or press the hotkey) ⇒ (P.S.in the non-auto printing status, you need to press button[PRN/ENTER])

for single item-Method 2:

input single item's price ⇒ press button[NET CHECK/SET AMT] ⇒ input relevant item's fresh commodity code (or press the hotkey) ⇒ (P.S.in the non-auto printing status, you need to press button[PRN/ENTER])

for multiple items-Method 1:

input item's quantity(number) ⇒ press button[UNIT/X] ⇒ input single item's price ⇒ press button[NET CHECK/SET AMT] ⇒ input relevant item's fresh commodity code (or press the hotkey) ⇒ (P.S.in the non-auto printing status, you need to press button[PRN/ENTER])

for multiple items-Method 2:

input single item's price ⇒ press button[NET CHECK/SET AMT] ⇒ input item's quantity(number) ⇒ press button[UNIT/X] ⇒ input relevant item's fresh commodity code (or press the hotkey) ⇒ (P.S.in the non-auto printing status, you need to press button[PRN/ENTER])

5.8 Price Tag Printing

This operation is suitable for price tag printing.

Operation steps: Put the item on the scale \Rightarrow Select item or enter the price and print a label \Rightarrow Press **[copy]** and press the number key (1-9) to print 1-9 pieces of price tags. / Press **[copy]** and press the **[00]** to produce 1000 copies of the price tag. If you want to stop, press **[C]**.

5.9 Quick Copy

Unlimited printing label function is fast and continuous printing same label.

Operation steps: Put the item on the scale \Rightarrow Select item or enter the price and print \Rightarrow Press **[copy]** and then press the number key **[0]** to do continue printing. (If you want to stop, press **[C]**).

5.10 Automatic fast packaging

This function can be applied to high-volume label of similar but different weight of the product.

Procedure: Activate the **[AUTO PRN]** and **[PRI LOCK]** function \Rightarrow choose a single product or enter a unit price \Rightarrow put the goods on the scale tray one by one, and the scale will start to print label automatically.

If when to operate fast, recommend to proceed as following procedure.

Procedure: Put item 1 on the scale tray, it will print label automatically \Rightarrow put item 2 on and take off item 1 take the label and stick it on item 1, next label will be printed automatically \Rightarrow put item 3 on and take off item 2 \Rightarrow take the label and stick it on item 2, next label will be printed automatically \Rightarrow repeat the procedure, it can save time.

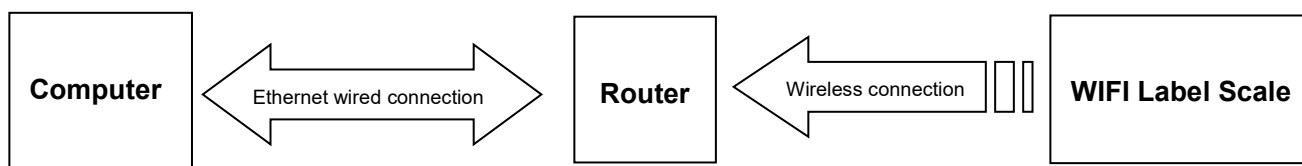
5.11 Operation button in common use

- Auto Print: Switch to automatic print, otherwise need to press button **[PRN / ENTER]** to print
- Charge unit: Press button **[UNIT]** 2 seconds to switch charge unit kg or g.
- Price Locking: Press button **[PRI LOCK]** to continuously print label of same product (product name will not disappear). Press again to unlock.
- Price change: Press any hotkey \Rightarrow press button **[PRICE]** and input price.
- Discount: Enter the discount rate (e.g.: enter 80 for 80% discount) and press button **[DISCOUNT]** to calculate Enter hotkey of the goods \Rightarrow put good on the scale and start printing
- Zero: press button **[ZERO]** to make zero of all the data.
- Peeling/Tare: weight the tare and press button **[TARE]** \Rightarrow put goods on the scale \Rightarrow enter corresponding hotkey \Rightarrow after printing, press button **[TARE]** to clear the tare weight.
- Clear: this button commonly used to clear the unit price and abnormal screen or an error message to keep the normal running of the system.
- Setting: press button **[SETTING]** 2 seconds to enter Setting interface, where you can reset basic setting and parameters of the printer and scale. Such as IP setting, restore factory setting, print barcode type setting, WIFI setting, etc. Press **[↑]** **[↓]** button to select function setting, press confirm to enter setting interface, then set it.

Note: when wrong operation cause system crash, need to restart the scale.

6. Wireless Label Scale Setting Instruction

6.1 Network connection mode



6.2 Router set up

1. Set the SSID name of the router (No more than 15 characters)
2. set the type of router's authentication, encryption algorithm, password,
Encryption type set as : WPA2-PSK
Encryption algorithm set as: AES
Password: no more than 15 characters

6.3 Label Scale Setting

1. Long press the set button, enter the settings menu
2. Select IP settings, set the IP address of the label scale (And need to be same network of routers which is the same IP address)
3. Select "SET WiFi" menu.
4. Enter the SSID WIFI set menu: input router's SSID Name.
5. Enter the "WiFi password mode" select menu: select the WPA2-PSK/AES option (need to be same as router encryption type).
6. Enter the "WiFi password" setting menu, enter the router password (the router password).
7. After finish settings and restart the label scale, computer and label scale can be wireless communications.

6.4 Computer RLS1000 software settings

Set label scale corresponding to the IP address, after setting, Use software's "test network" icon for network testing, then connectivity can be normal communication, if it's failure, please check and make sure PC's IP address is in the same segment.

7. Function setting

- This function can be locked with a password. Password can be set and reset through PC.

7.1 Input settings of single item

Step One: press button **[PLU]** until screen shows "single item edit" to enter the edit mode.

Step Two: Type 6 digits of fresh commodity code and press button **[PRN/ENTER]** to confirm. When the screen shows "Product Name", enter price. (Meanwhile, can press **[↑][↓]** button to select the needed item, or enter corresponding letter shown in below sheet, if enter "N" means to edit item name.)

- **L** single item Fresh Commodity code: Enter fresh commodity code within 6-digit
- **N** single item name: You can use the keyboard to enter the name of a single item, up to 36 digits
- **H** Hotkey setting: Up to three numbers, while preserving the changes of PLU
- **C** single item Model: Enter Item No. within 10 digits
- **P** Price: Enter the unit price of goods no more than 7 digits
- **U** charge unit: Use button **[↑][↓]** to select g or Kg
- **D** department code: Enter the department code within 0-99
- **B** Bar Code Type: Select the barcode type from 0-99
- **T** Tare: Input tare weight within maximum
- **Y** Package Type: Select packaging type with the left and right buttons (0: Normal, 1: fixed weight, 2: fixed price, 3: fixed weight & price)
- **W** Package weight: Enter PLU packaging weight
- **E**: Package Tolerance: (0-20%)
- **F** Expiration: enter expiration date between 0~365
- **M** Information 1: input selected information code(0-197)
- **R** discount setting: (- 10 ~ -125) (- 10 ~ -1) corresponding to discount of type 10-1 (1 ~ 125) corresponding to a percentage discount
- **I** single item's label setting: 8 bits, 0: A0,1: A1,2: B0, 3: B1,4: C0,5: C1,6: D0,7: D1
- **S** Save for changes

7.2 System set up

- That operation can be lock by password. The password is set in PC and can be change at anytime.

Step 1: press **[set]** key and hold on 3s to enter system setting status.

Step 2: press **[↑][↓]** or direct number key accordingly to select item.

Step 3: press **[PRN/ENTER]** key to confirm.

Special note: In menu, 0=not, 1=yes, if others, will note.

Set menu items as below:

- **@** IP address: set IP address of label scale
- **[↑][↓]** Subnet mask: set the subnet mask of the scale
- **[↑][↓]** Gateway: set the gateway of the scale
- **D** print density set: press **[↑][↓]** to select 0~7, from low to high, total 8 levels
- **V** print speed set: press **[↑][↓]** to select 0~7, from fast to slow, total 8 levels
- **S** select paper type: press **[↑][↓]** to select 0~1, total 2 types: 0:label,1:Receipt (small ticket)
- **A** paper position fine-tuning: press **[↑][↓]** to select -8~+8 , total 17 offset, adjust to most suitable

starting position

- **[↑]/[↓]** Label style selection: D0 or D1 tag with / style **[↑]/[↓]**
- **T** date adjusting; set current date and time
- **N** date format: set date format 0: DDMMYY, 1: MMDDYY, 2: YYMMDD
- **[↑]/[↓]** whether to print weight unit: select to print weight unit or not
- **[↑]/[↓]** whether to print price unit: select to print price unit or not
- **J** decimal digits in unit price: set decimal digits in unit price
- **[↑]/[↓]** set default barcode type: set barcode type.(0~99, the details refer to appendix two in software user manual)
- **X** total price precision: set total price precision(1: N.N0, 2: N.NN, 3: N.N)
- **[↑]/[↓]**total price carry set: set carry value.(for example round, that is 5)
- **W** print time: set print time or not.(time format is hour and minute)
- **Y** year digits: set year format.(0: YY, 1: YYYY)
- **G** use after discount price or not: set barcode to print after discount price or not
- **[↑]/[↓]** display items in weight field: set 0: weight, 1: quantity
- **Q** print delete line mark: set 0: print, 1: not
- **[↑]/[↓]** select barcode width: 0: wide, 1: narrow
- **E** The supplementary of default information 1 :0 means not default information1
- **F** The supplementary of default information 2 :0 means not default information2
- **[↑]/[↓]** discount goods belong to special department: setting if discount goods belong to special department or not
- **R** IP setting on the host machine: using this scale as the host machine to set IP address, to connect other scales
- **P** statistics function mode: Choosing “yes” or “not ” to open statistics function mode for sales goods
- **[↑]/[↓]** running account overflowing alarm: Alarming or not when the running account overflow
- **[↑]/[↓]** summation printing: print summation label, total amount/total quantity/quantity of total label(clicking twice (set) to set)
- **[↑]/[↓]** sum all quantity of single goods' label: print all information of all sales goods((clicking twice (set) to set))
- **[↑]/[↓]** clear all the summation data: clean up all the summation data((clicking twice (set)to set))
- **[↑]/[↓]** fine tuning of paper-out position: adjust paper's offset value: 0~16
- **Z** zero print: whether to start zero print price tag
- **[↑]/[↓]** Print test page: printing self test page or not
- **[↑]/[↓]** Auto print: Whether the default setting is auto print when power on
- **[↑]/[↓]** Cover sensor on/ off: Whether to turn off the paper pickup detection function
- **[↑]/[↓]** Cover sensor AD : Paper pickup detection sensor, intelligent judgment or manual setting (31-253)
- **[↑]/[↓]** Print page number: Set whether to print the label page number or not
- **[↑]/[↓]** Set print barcode type: set all barcode types for printing
- **[↑]/[↓]** LED backlight: Use $[↑]/[↓]$ to select LED backlight brightness 0~4 from high to low, Five different brightness levels in total
- **[↑]/[↓]** Open num + amt print or not: Enter the number and total price to print a label immediately.

- **[↑]/[↓]** Clear PLU data YES or NOT: Whether to clear all data
- **[↑]/[↓]** Sleep time: set the time for automatically turning off the screen when the scale has no operation
- **[↑]/[↓]** Set the number of copies: Set the default number of labels to be copied when the copy button is pressed (0 means off)
- **[↑]/[↓]** Head input: Set the slogan displayed when the screen is idle
- **[↑]/[↓]** Receipt PLU name align: set the alignment of the product name when printing the receipt (left, middle, right alignment)
- **[↑]/[↓]** Close show time: Turn off the time display when the scale is not operating
- **[↑]/[↓]** Edit barcode department: Set the department number in the barcode
- **[↑]/[↓]** EAN13 1st digit at outside: Whether the first digit of the EAN13 barcode is placed outside the barcode: Yes/No
- **[↑]/[↓]** Recover factory system para: Whether to restore the factory settings
- **[↑]/[↓]** SET WIFI: Set WIFI SSID, WIFI Encryption and WIFI password
- **[↑]/[↓]** About: View the device model and version number

7.3 Lock

SETTING, PLU, DISCOUNT, PRICE, and TARE functions can be locked via pass code. Password of each function is independent, which can be set via pc software then download to each scale, and it can be change at any time. more details please check the security item in the function setting II which is in the software operating instructions .

- **Open (before shutdown by software, Function after opening is always valid)**

Open ⇨ choose the function you would like to open

For example:

Open “SETTING” function

Click **[SETTING]** key for 2 seconds to come into the system setting status, system remind that enter pass code, it means that entering the pass code which is set via pc software.

Open “PLU” function

Click **[PLU]** key for 2 seconds to come into the PLU editing status, system remind that enter pass code, it means that entering the pass code which is set via pc software.

Open “DISCOUNT” function

Click **[DISCOUNT]** key for 2 seconds to come into the discount status, system remind that enter pass code, it means that entering the pass code which is set via pc software.

Open “PRICE” function

Click **[PRICE]** key for 2 seconds to come into the price setting status, system remind that enter pass code, it means that entering the pass code which is set via pc software.

Open “TARE” function

Click **[TARE]** key for 2 seconds to come into the tare setting status, system remind that enter pass code, it means that entering the pass code which is set via pc software.

- **Restored lock**

Click **[ON/OFF]** key for 2 seconds to turn off the scale ⇨ click **[ON/OFF]** to turn on the scale.

8. Troubleshooting

8.1 Scales crash

- Boot up without any response

Reasons:

- a. Bad contact between the power plug and socket.
- b. The power cord is disconnected
- c. Fuse blown
- d. The power board is damaged
- e. Bad motherboard

Solutions: use millimeter to check them one by one, use method of exclusion to find the solution.

- Boot up without any sound, No display, backlight.

Reasons: the spark generated by the power plug impact the program.

Solutions: Replace the Motherboard, reset the number, and download all the files.

- Boot up without any sound, display "Update"

Reasons:

- a. Program downloads error.
- b. Misoperation during the downloading of the program (such as halfway power outage).

Solutions:

- a. Re-download the correct program, the IP address should be the same as the scale's IP when the Ethernet is updated (if it has not been set, the default IP: 192.168.1.87)
Then download it; and when using the serial port to update, input any number as the scale number of the label scale, and update it after setting the baud rate to 115200.
- b. Ditto.

8.2 Print related issues

- Print a blank label, paper orientation is normal.

Reasons:

Setting label type error. Usually the label type computer download is D0, so label type of label scale printing should be set D0. Or the printed label is blank.

Solutions:

- a. adjust the settings in following key order (on the scale).
[SETTING] \Rightarrow Enter the system setting \Rightarrow Press hotkey[L] \Rightarrow Enter the select label type (0: D0; 1: D1) \Rightarrow Press [PRN/Enter]
- b. It's also available to adjust software on computer. Open label scale , input serial number of the scale. Change label type to D0 in set function, then carry out function set command.

- Print half or a half label, paper orientation is abnormal.

Reasons:

- a. Set paper type detection error.
- b. Printer rear photoelectric has slanting direction or is dust.
- c. Photovoltaic panels was damage
- d. The photoelectric module behind the printer is bad

Solutions:

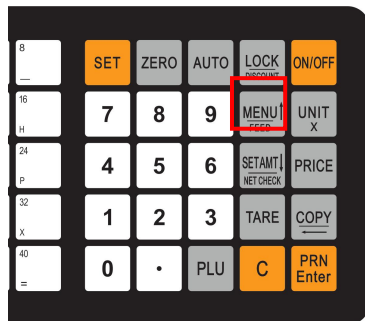
- a. adjust the settings in following key order on the scale
[SETTING] ⇨ Enter the system setting ⇨ Press hotkey[S] ⇨ Enter the select label type (0: label; 1: receipt 2: label, without recycle paper roll) ⇨ Press [PRN/ENTER]
It's also available to adjust software on computer. Open label scale , set paper type to "Label" in set function, the pass the setting to error scale.
- b. Check whether printer rear photoelectric has slanting direction or is dust.
- c. If the problem still can't be solved, consider changing photoelectric module. It is better to handle this step by professional person of our company.
- d. Wash the rubber roller.

Wash the rubber roller pictures show:

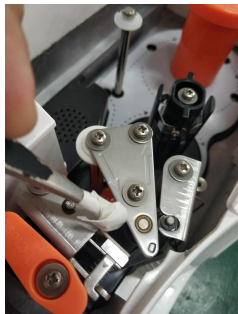


recycle paper spring, disboard print paper.

2. set label scale as paper feed menu, long press paper feed menu and let rubber covered roller in idle status.



3. Take a clean cotton swab dipping alcohol and cleaning the roller back and forth.



- Fuzzy print and it is not black enough

Reasons:

- a. Printer head has not been fasten well
- b. Thermal head is dirty

- c. Print density is too low

Solutions:

- a. Re-fasten the printer head well
- b. Wipe the thermal head with a soft cloth glued alcohol gently
- c. Increase print density

- Print a label with half clear and half fuzzy or even blank.

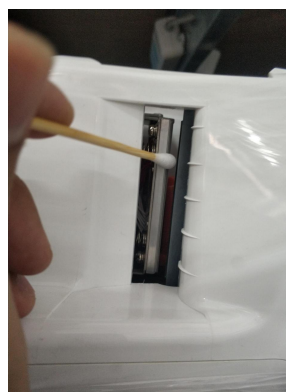
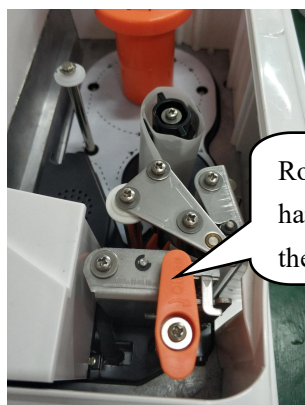
Reasons:

- a. Printer head has not been fasten well
- b. Thermal head is dirty
- c. The print head deformation
- d. Motherboard failure
- e. Poor or damaged head piece wiring harness

Solutions:

- a. Re-fasten the printer head well.
- b. Wipe the thermal head with a soft cloth glued alcohol gently.
- c. If the problem still can't be solved by above method, then cause of the error is the print head deformation, need to change printer. Bad printer should be handled by professional person of our company.
- d. Replace the motherboard
- e. Re-plug and replace the head piece wiring harness

Wash the thermal head pictures show:



- Weird character show on label or character can't be printed out(including Chinese and English)

Reasons:

- a. Haven't download fonts or single-byte character.
- b. Font conflict.

Solutions:

- a. Re-download fonts (including single-byte and double-byte character.)
- b. Re-select single-byte and double-byte fonts by files/option/label scale fonts, then download Chinese and English fonts.

8.3 The key issues

- Keys have been ringing, display is normal

Reasons:

- a. Line piece of key cause short circuit.
- b. Sharp object resist the key.

Solutions:

- a. Change line piece of the key.
- b. Move the sharp object.

- Some keys do not ring

Reasons:

- a. The ribbon cable connected between the key board and the mother board is not plugged in.
- b. The Mylar button FPC ribbon cable is not plugged in.
- c. The key is damaged.

Solutions:

- a. Check out key ribbon cable, re-insert properly.
- b. The Mylar button FPC ribbon cable is re-plugged in or pulled out.
- c. If the problem still can't be solved by above method, then maybe the key is damaged, change it.

8.4 Weigh problem

Weigh inaccurately

Reasons:

- a. The rubber mat supporting scale pan is touching the top cover.
- b. Damp, module aging, or regional differences to make the weigh inaccurately.
- c. The load cell damaged due to the overload.
- d. Not adjust the Gravitational acceleration.

Solutions:

- a. Check the top cover is installed well, or not. If yes, reinstall load cell's support frame.
- b. Leaning the Zero/Full weigh again. Replace the mainboard, AD board, even load cell if the problem could not be solved.
- c. Replace the load cell and support frame.
- d. Adjust the Gravitational acceleration.

PS: Generally, the scale should be returned back to our company due to the problems of AD board and load cell.

Zero point instability

Reasons:

- a. Environmental impact, such as vibration, wind or strong magnetic interference.
- b. Weighing electric circuit gets damp.
- c. The wind resistance function has not opened.
- d. The leveling mat is not leveling.

Solutions:

-
-
- a. Exclude the interference factors.
 - b. Replace the mainboard.
 - c. Open the wind resistance function(set it in function set).
 - d. Adjust the leveling mat to be leveling.
 - e. If still not, return back the scale to our company.

Unable to weigh

Reasons: Bad mainboard, bad AD board or bad load cell.

Solutions:

- a. Replace the mainboard.
- b. Check the AD board is OK, or not, return back to our company if this problem could not be solved.

8.5 Communication problem

Unable to communicate

Reasons:

- a. Communication ports are set up incorrectly
- b. The incorrect serial number of scale, or the incorrect IP address
- c. The incorrect connection of interface, or problem on Ethernet cable
- d. The error on communication board or mainboard

Solutions:

- a. Confirm the available communication ports
- b. Confirm the same serial number in scale and RLS1000 software, and same IP address in scale and RLS1000 software
- c. Check if the network cable is damaged and the network port is securely inserted
- d. Please replace mainboard or communication board to confirm the error, if there are not the problems mentioned above

8.6 Display problem

● No display or display but no characters

Reasons:

- a. Display pole is not installed well, result in poor contact with control board.
- b. Water in display pole base, cause shorting and corrosion on circuit board.
- c. Display damage.

Solutions:

- a. Install display pole, lock fixed bolt.
- b. Change circuit board or display pole.
- c. Change display pole.

8.7 Error code

- Er-01: Total Price Over
- Er-02: Label Height Over 90mm
- Er-03: None Label to Be Copy
- Er-04: NO Find Label Gap
- Er-05: Weight Error

- Er-06: The PLU NO Sale Date
- Er-07: Price Can Not Be Zero
- Er-08: Please Exit Tare Mode
- Er-09: Salesman Err
- Er-10: Please Close Orange Handle
- Er-11: Wrong LF code or PLU Not Exist
- Er-12: Weight Not Change
- Er-13: NO Paper
- Er-14: -----(Weight Over)
- Er-15: Take Out Label
- Er-16: PLU is not Defined on Hotkey

8.8 Other problems

- **Print paper difficultly, paper roll fixed.**

Reasons: Maybe the mismatch between paper roll and shaft, or the wrong installation of shaft.

Solutions: It is better to return this printer to factory for reinstallation.

- **“KaKa” sound when printing, don’t feed paper(note: if appear this problem, please don’t press “print” button, otherwise may burn out main board)**

Reasons:

- a. Paper installation is not correct, cause paper jam.
- b. Paper receiving shaft jammed.
- c. There is stuff between small gear and big gear.

Solutions:

- a. Reinstall paper correctly.
- b. Reinstall paper receiving shaft.
- c. Check gear, remove stuff.

- **Press PLU hotkey sometimes don’t print, but the keyboard response**

Reasons:

- a. He tray is unstable.
- b. No download PLU data to the scale.
- c. There is still label paper in the printer, did not take away in time.

Solutions:

- a. Hang the label scale horizontally to ensure that it is in a horizontal position.
- b. Download all PLU data to scale from the software.
- c. Take away label paper in time.

- ☺ The failures listed above involving the handle of mainboard and sensors, the replacement of the print head, printer, photocell, etc hardware should return to the company and handled by the professional staffs in principle.
- ☺ Fault can’t be solved as above solutions, should return to the company and handled by professional staffs.
- ☺ There is two communication ports in label printing scale, they are RS232 and TCP/IP(Ethernet), RS-232 type is optional.

9. The acceleration of gravity revised table

COUNTRY	CITY	G(m/sec ²)	COUNTRY	CITY	G(m/sec ²)
Greece	Athens	9.800	Scotland	Glasgow	9.816
South Africa	Cape town	9.796	Spain	Madrid	9.800
Netherlands	Amsterdam	9.813	Singapore	Singapore	9.781
Norway	Oslo	9.815	Argentina	Buenos Aires	9.797
New Zealand	Auckland,NZ	9.799	United Kingdom	London,Greenwich	9.812
New Zealand	Wellington,NZ	9.801	Australia	Melbourne	9.800
Taiwan	Taichung	9.789	Australia	Sydney	9.797
Taiwan	Taiwan	9.788	Italy	Milano	9.806
Taiwan	Taipei	9.790	Italy	Rome	9.803
Denmark	Copenhagen	9.815	India	Calcutta	9.788
Germany	Frankfurt	9.810	Japan	Tokyo	9.798
Mexico	Mexico City	9.779	Canada	Ottawa	9.806
U.S.A	Birmingham	9.813	Canada	Vancouver,BC	9.809
U.S.A	Chicago	9.803	Cuba	Havana	9.788
U.S.A	Los Angles	9.796	Kuwait	Kuwait	9.795
U.S.A	New York	9.802	Cyprus	Nicosia	9.797
U.S.A	San Francisco	9.800	Thailand	Bangkok	9.783
U.S.A	Washington,DC	9.784	Portugal	Lisbon	9.801
Belgium	Brussels	9.811	France	Paris	9.809
Brazil	Rio de Janeiro	9.786	Finland	Helsinki	9.819
Sweden	Stockholm	9.818	Philippines	Manila	9.784
Switzerland	Zurich	9.807			

- It should be handled by person in our company or dealers if want to adjust acceleration of gravity.



Rongta Technology (Xiamen) Group Co., Ltd.

ADD: No.88, Tonghui South Road, Tongan, Xiamen, China.

WEB: www.rongtatech.com

TEL: 0086-592-5666129 FAX: 0086-592-5659169

